



CATIA PLM Express

CATIA - Piping Schematic to Design

Enables System engineer and piping designer to cover the global process engineering for piping design project.

Overview

CATIA - Piping Schematic to Design product enables the user to design and manage logical lines of piping systems using standards and specifications according to industry usage. It enables creation of component catalogs with multi-representation, attributes and design rules. The system engineer creates intelligent schematics piping diagrams.

Fully integrated, the piping designer builds the 3D design directly from 2D diagrams (2D/3D driven). These intelligent diagrams and 3D design capability enable users to create and validate their designs with respect to company know-how.

This product covers project engineering from basic design up to detailed design.

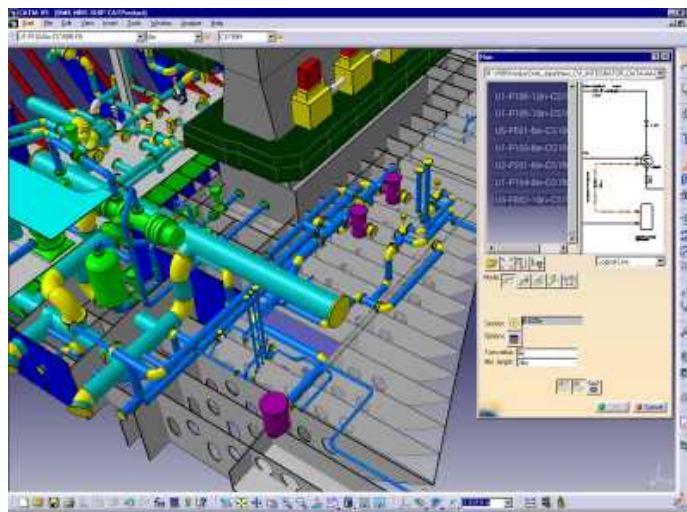
Piping versus Tubing: Piping standard components such as valves and flanges are welded or bolted with straight pipes.

Benefits

- Improves product performance and quality thanks to standards and material specifications taking into account the design rules, automatic parts placement and multi-representation
- Full associativity between 2D schematics and 3D piping design
- Improve time to design with an intuitive user interface to annotate, validate the model, query data and generate appropriate report information
- Single geometric modeler for all the equipment and system products such as Tubing, HVAC, etc.,
- Full integration between mechanical and equipment and system products
- Capitalizes company know-how to design right the first time
- Organizes catalog customization with full parametric components alongside technological attributes (pressure, temperature, etc.)

Capabilities

- Creates catalogs of 2D and 3D parametric components according to standards and material specifications
- Defines and manages piping lines for different engineering systems
- Creates intelligent piping and instrumentation diagrams with respect to standards and specifications such as text annotation templates, off-sheets connector and automatic gaps
- Designs the 3D preliminary piping layout routes with design rules checking (minimum length and turn)
- Adds spec-driven 3D piping components to detail the design
- Allows associative 3D creation directly driven by the 2D schematics
- Provides BOM reports, query and analysis



Visit us at www.3ds.com/my-catia-plm-express

Dassault Systèmes (Head Office)

9, quai Marcel Dassault - BP 310
92156 Suresnes Cedex - FRANCE
Tel: 33 (0)1 40 99 40 99

Dassault Systèmes of America

6320 Canoga Avenue
Trillium East Tower
Woodland Hills,
CA 91367-2526 - USA
Tel : 1 818 999 2500

Dassault Systèmes

Pier City Shibaura Bldg 10F
3-18-1 Kaigan, Minato-Ku
Tokyo 108-0022 - JAPAN
Tel : 81 3 5442 4011

About Dassault Systèmes

As a world leader in 3D and Product Lifecycle Management (PLM) solutions, Dassault Systèmes brings value to more than 90,000 customers in 80 countries. A pioneer in the 3D software market since 1981, Dassault Systèmes develops and markets PLM application software and services that support industrial processes and provide a 3D vision of the entire lifecycle of products from conception to maintenance. The Dassault Systèmes portfolio consists of CATIA for designing the virtual product - SolidWorks for 3D mechanical design - DELMIA for virtual production - SIMULIA for virtual testing and ENOVIA for global collaborative lifecycle management, including ENOVIA VPLM, ENOVIA MatrixOne and ENOVIA SmarTeam. Dassault Systèmes is listed on the Nasdaq (DASTY) and Euronext Paris (#13065, DSY.PA) stock exchanges. For more information, visit <http://www.3ds.com>

CATIA, DELMIA, ENOVIA, SIMULIA and SolidWorks are registered trademarks of Dassault Systèmes or its subsidiaries in the US and/or other countries. Copyright Dassault Systèmes 2002, 2006. All rights reserved. IGRIP®, QUEST®, IGRIP®, ULTRAARC®, ULTRAPLANT®, ULTRASPOT®, VIRTUAL NC® are registered in the US Patent and Trade Mark Office by DELMIA Corp. INSPECTTM is owned by DELMIA Corp.



TECMES

MAIS INFORMAÇÕES:

Para obter mais informações sobre produtos e soluções PLM, acesse: www.tecmes.com.br
Avenida Jabaquara, 2940 – 2º andar
Planalto Paulista - São Paulo – SP - CEP 04046-500
Telefones +55 11 2197-1000 / Fax: +55 11 2197-1007