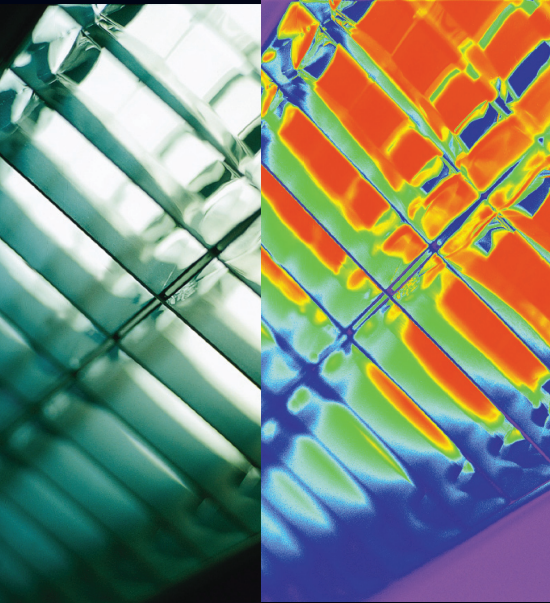




Lighting Solutions

Illuminating the Lighting Industry



Integrated Simulation Solutions for Commercial and Industrial Lighting Applications

Combine photometric and mechanical data to analyze and accurately predict the Behavior of Light.

Optis has the only software simulation solutions that provides a single virtual prototyping environment to allow optical and mechanical engineers to perform up-front analysis and product design optimization.

Access optical and material properties through an on-line library, perform advanced measurements, exact color analysis, compare simulation results from different product configurations, and export industry standard reports without middleware or the need to manually import or export data.

Increase employee productivity and reduce design cycles from weeks to hours by seamlessly integrating mechanical and optical information from design concept to product validation.

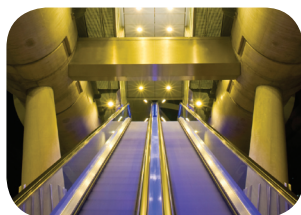
www.optis-world.com





Lighting Solutions

Illuminating the Lighting Industry



Simulate any lighting system. Luminaires, Emergency & Safety Lighting, Under Cabinet or Recessed Lighting, Traffic Lights, Landscape Lights, External Building Lighting, Arena and Stadium Lighting.

Utilize any LED, Incandescent or Fluorescent source. Design and optimize lens and reflector systems to meet desired intensity, illuminance and luminance outputs; and CIE color standards. Determine correlated color temperature.



TECMES

MAIS INFORMAÇÕES:

Para obter mais informações sobre produtos e soluções PLM, acesse: www.tecmes.com.br

Avenida Jabaquara, 2940 – 2º andar

Planalto Paulista - São Paulo – SP - CEP 04046-500

Telefones +55 11 2197-1000 / Fax: +55 11 2197-1007