

# CATIA PLM Express

## CATIA - Electrical Cable Layout

**Launch electrical cable design project in associative 2D/3D integrated environment**

### Overview

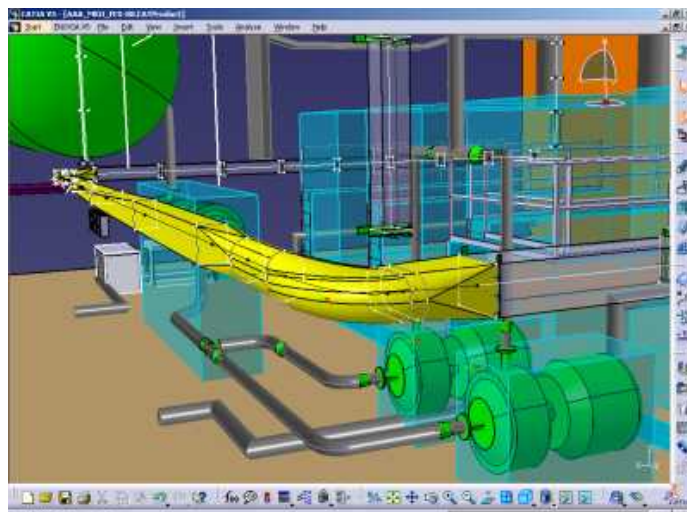
CATIA - Electrical Cable Layout creates and manages logical designs of electrical systems using industry standard conventions, terminology and practices. Designers easily create space reservation for electrical systems which enables reviews at early stage of design, in parallel of 2D electrical diagrams definition. Fully integrated, the user directly drives the creation of the 3D detailed design of cables and raceways from 2D diagrams. This intelligent diagram and design capabilities enable the user to create and validate their designs. Electrical cables can be accessed for 3D specification/schematic-driven design, dynamically maintaining consistency between the schematic and 3D design

### Benefits

- Improves product performance and quality thanks to standard and materials specification taking account design rules, automatic parts placement and multi-representation
- Full integration and associativity between 2D schematics and 3D electrical cable design
- Schematic design drives creation of 3D design
- Improves time to design with an intuitive user interface to annotate, validate the model, query data and generate appropriate report information

## Capabilities

- Defines space reservations for your electrical systems in an early phase in the design, including lofted pathways
- Creates 2D diagram: component placement and insertion, line routing and connectivity management, standard symbols and components management
- Associative 2D/3D integration
- Creates specification-driven raceway and conduit parts and lines, layout route definition and management
- Manual or automatic route cables in 3D cableways



Visit us at [www.3ds.com/my-catia-plm-express](http://www.3ds.com/my-catia-plm-express)

### Dassault Systèmes (Head Office)

9, quai Marcel Dassault - BP 310  
92156 Suresnes Cedex - FRANCE  
Tel: 33 (0)1 40 99 40 99

### Dassault Systèmes of America

6320 Canoga Avenue  
Trillium East Tower  
Woodland Hills,  
CA 91367-2526 - USA  
Tel : 1 818 999 2500

### Dassault Systèmes

Pier City Shibaura Bldg 10F  
3-18-1 Kaigan, Minato-Ku  
Tokyo 108-0022 - JAPAN  
Tel : 81 3 5442 4011

### About Dassault Systèmes

As a world leader in 3D and Product Lifecycle Management (PLM) solutions, Dassault Systèmes brings value to more than 90,000 customers in 80 countries. A pioneer in the 3D software market since 1981, Dassault Systèmes develops and markets PLM application software and services that support industrial processes and provide a 3D vision of the entire lifecycle of products from conception to maintenance. The Dassault Systèmes portfolio consists of CATIA for designing the virtual product - SolidWorks for 3D mechanical design - DELMIA for virtual production - SIMULIA for virtual testing and ENOVIA for global collaborative lifecycle management, including ENOVIA VPLM, ENOVIA MatrixOne and ENOVIA SmarTeam. Dassault Systèmes is listed on the Nasdaq (DASTY) and Euronext Paris (#13065, DSY.PA) stock exchanges. For more information, visit <http://www.3ds.com>

CATIA, DELMIA, ENOVIA, SIMULIA and SolidWorks are registered trademarks of Dassault Systèmes or its subsidiaries in the US and/or other countries. Copyright Dassault Systèmes 2002, 2006. All rights reserved. IGRIP®, QUEST®, IGRIP®, ULTRAARC®, ULTRAPAINTE®, ULTRASPOT®, VIRTUAL NC® are registered in the US Patent and Trade Mark Office by DELMIA Corp. INSPECTTM is owned by DELMIA Corp.



TECMES

### MAIS INFORMAÇÕES:

Para obter mais informações sobre produtos e soluções PLM, acesse: [www.tecmes.com.br](http://www.tecmes.com.br)  
Avenida Jabaquara, 2940 – 2º andar  
Planalto Paulista - São Paulo – SP - CEP 04046-500  
Telefones +55 11 2197-1000 / Fax: +55 11 2197-1007